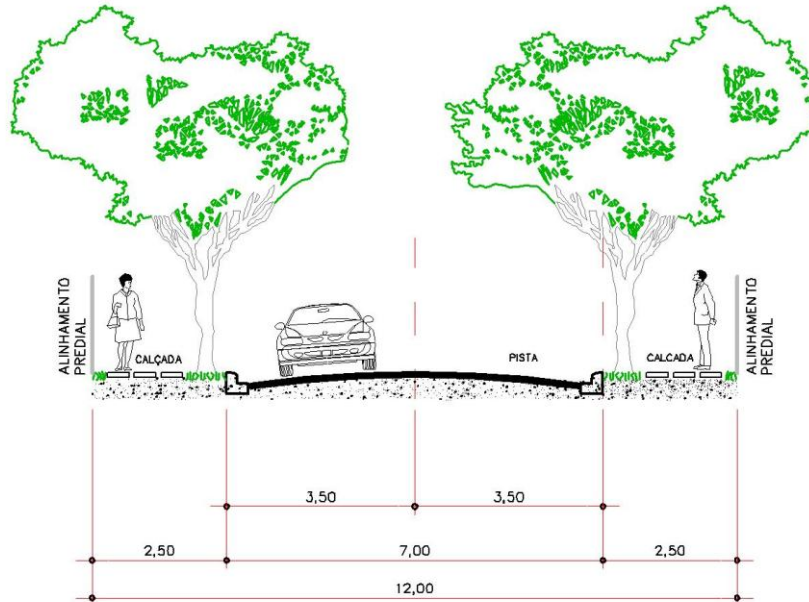
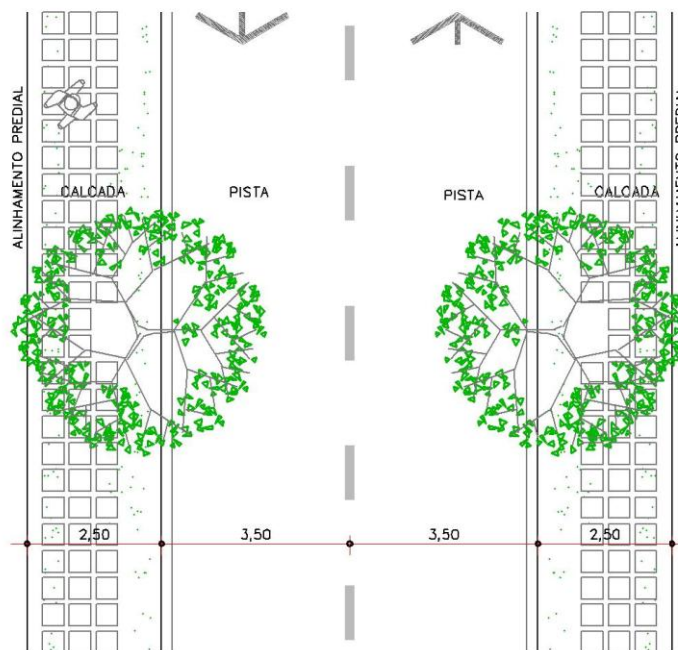


# ANEXOS

## ANEXO II VIAS LOCAIS



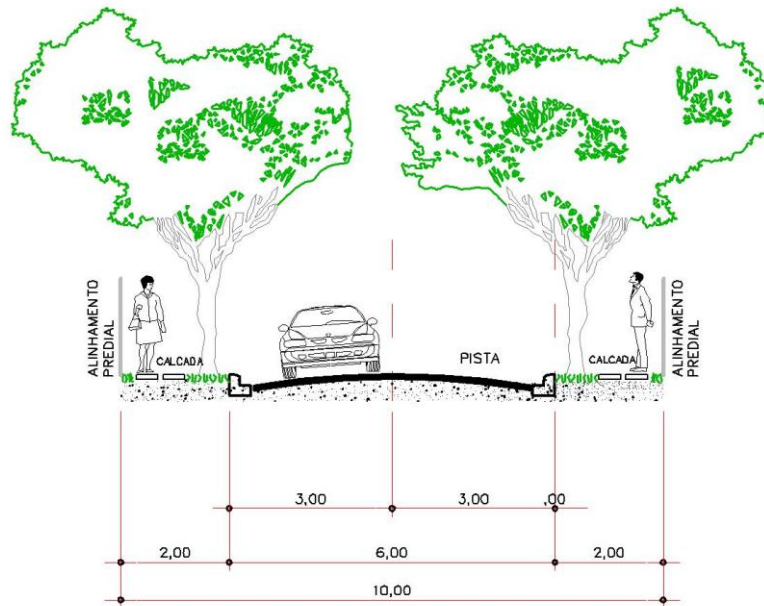
CORTE  
ESC.: 1:125



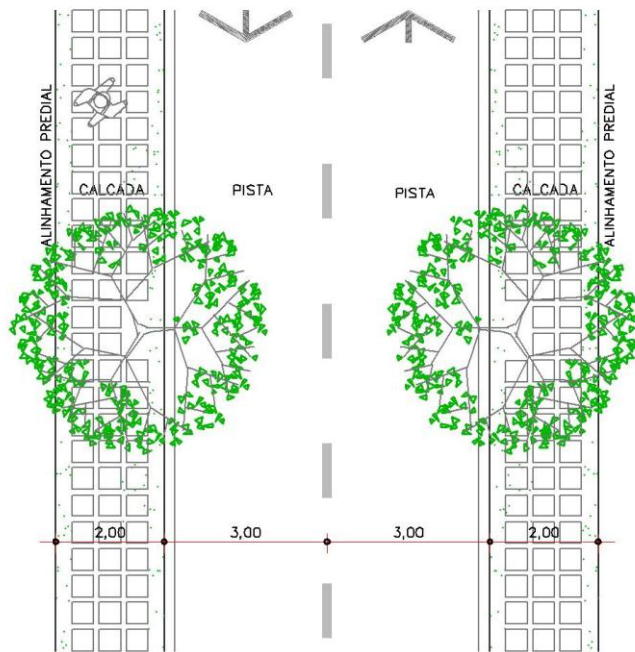
PLANTA  
ESC.: 1:125

# ANEXO III

## VIAS LOCAIS EM ZONAS DE INTERESSE SOCIAL



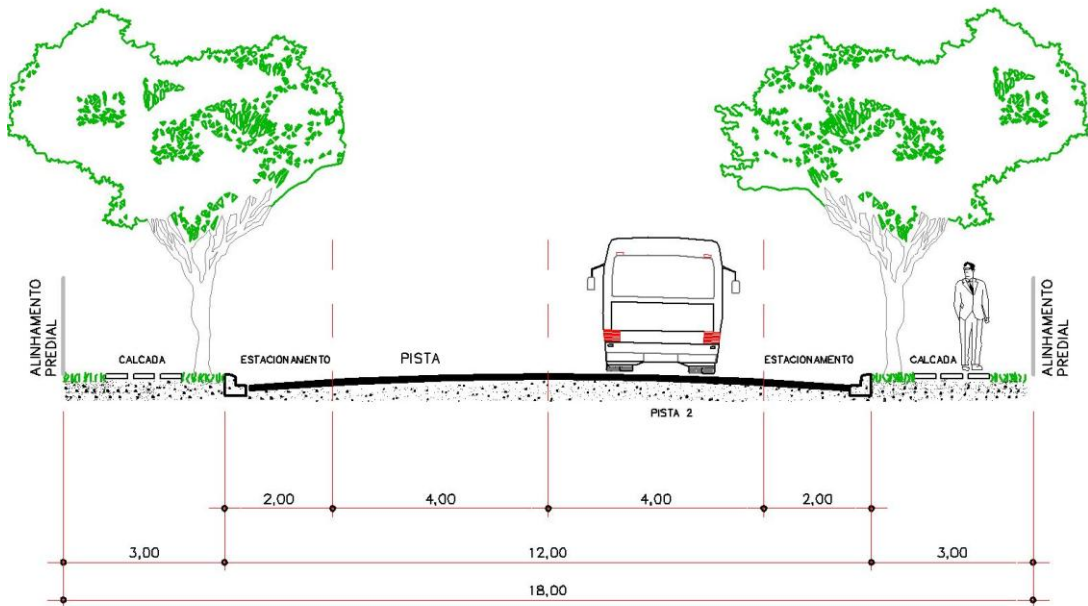
**CORTE**  
ESC.: 1:125



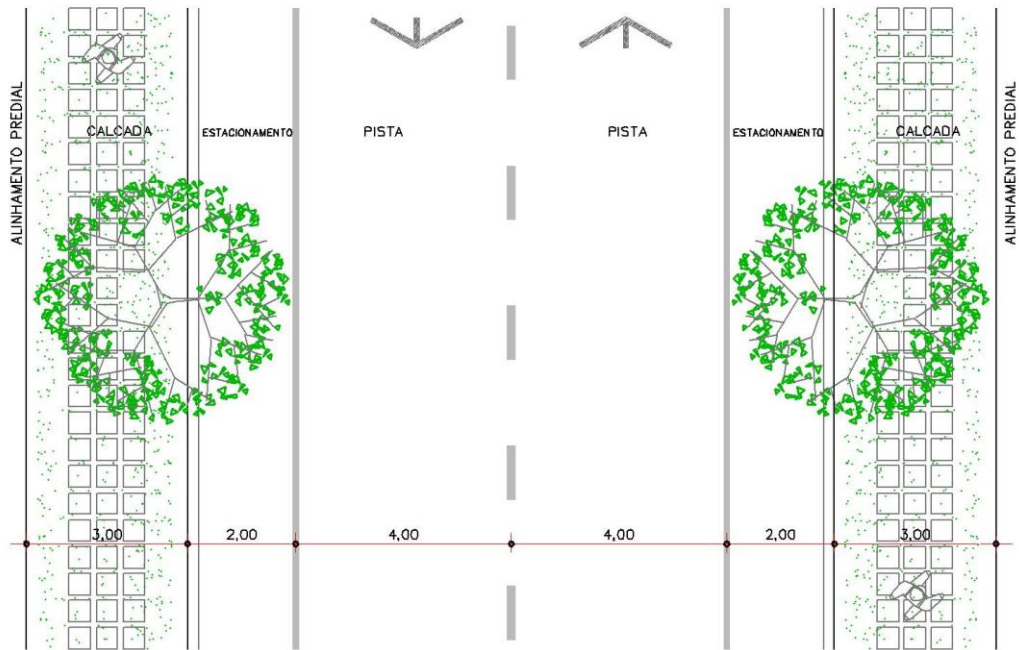
**PLANTA**  
ESC.: 1:125

# ANEXO IV

## VIAS COLETORAS



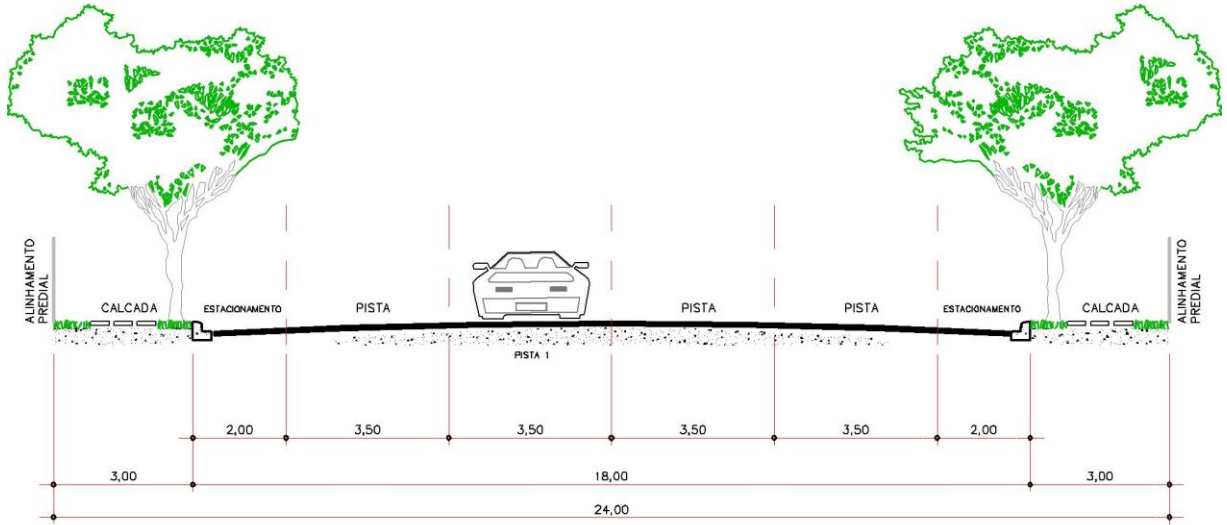
**CORTE**  
ESC.: 1:125



**PLANTA**  
ESC.: 1:125

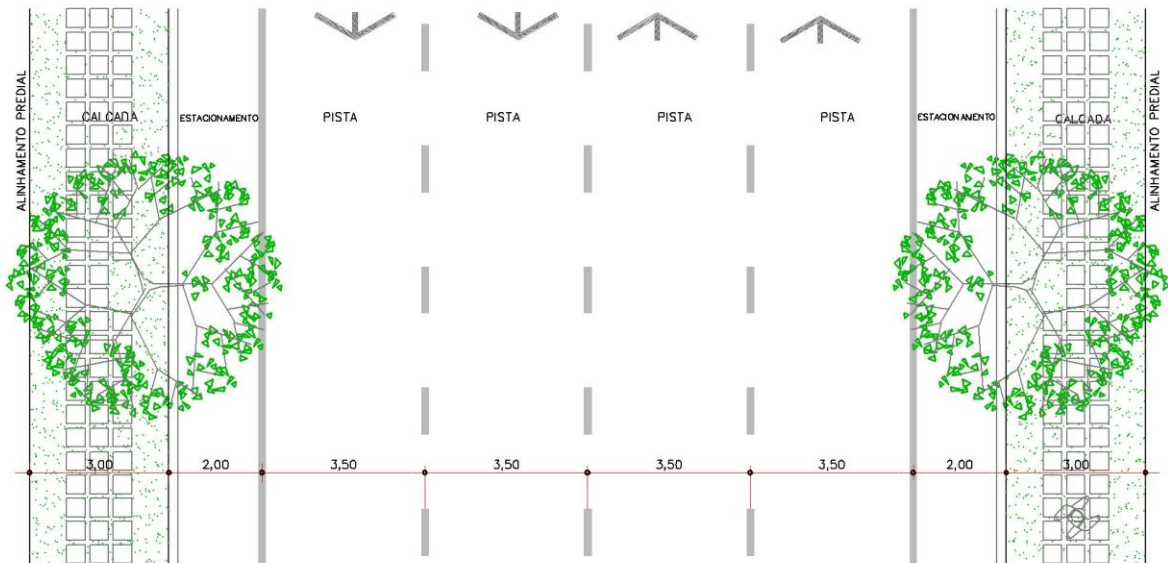
# ANEXO V

VIAS ANEL DE CONTORNO E ARTERIAIS



## CORTE

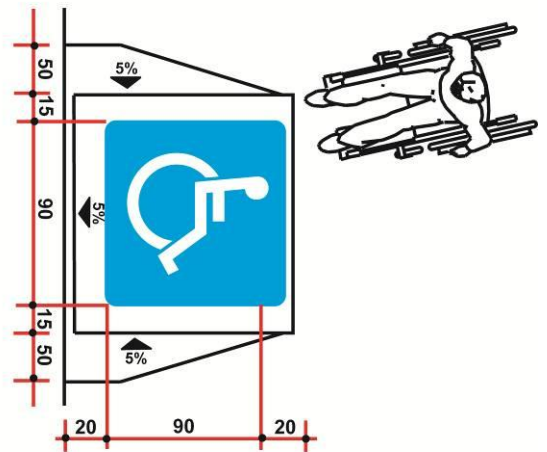
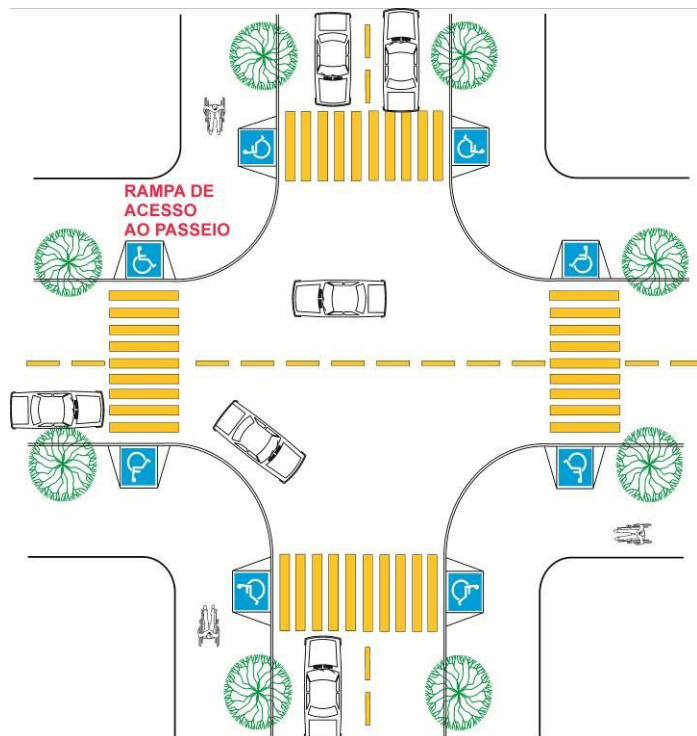
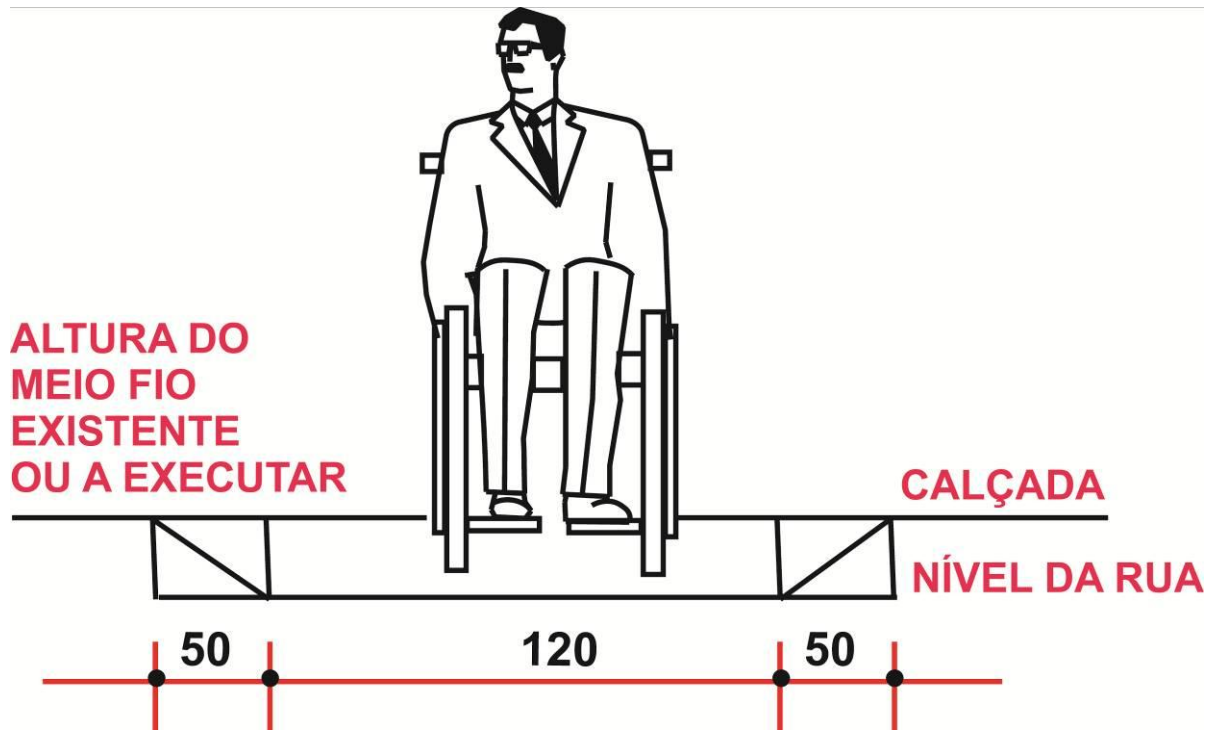
ESC.: 1:125



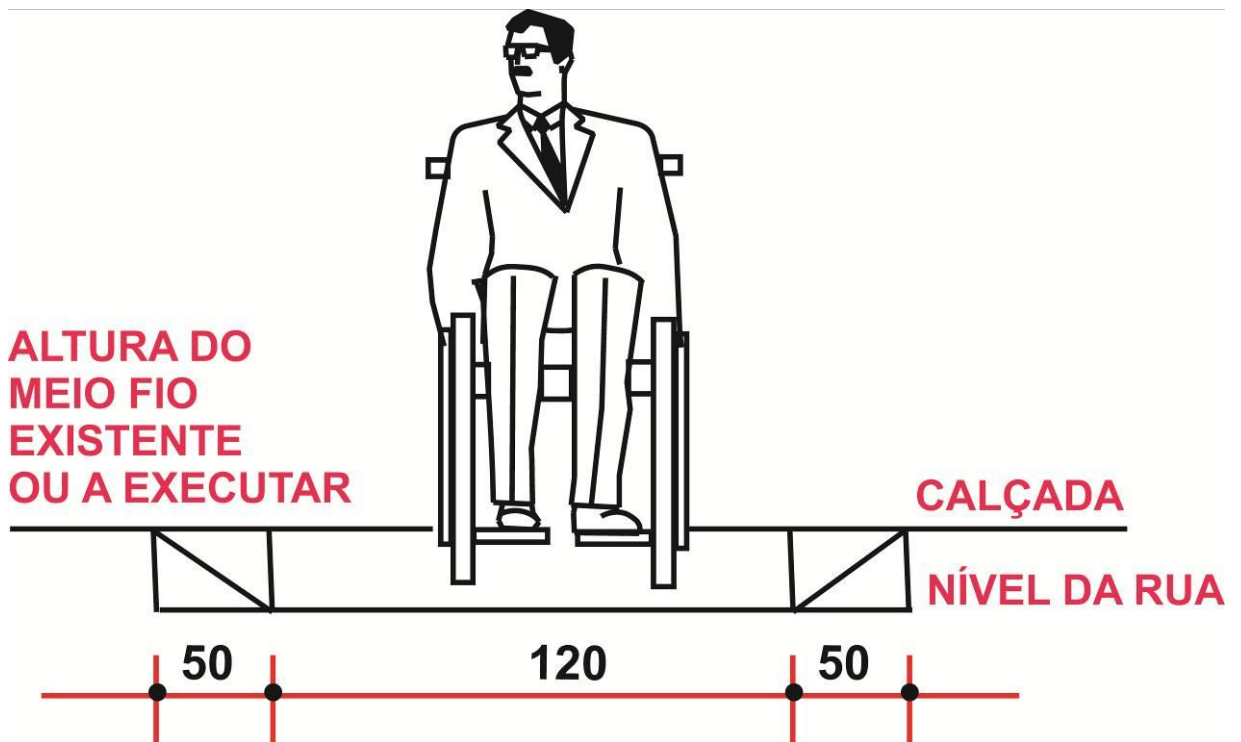
## PLANTA

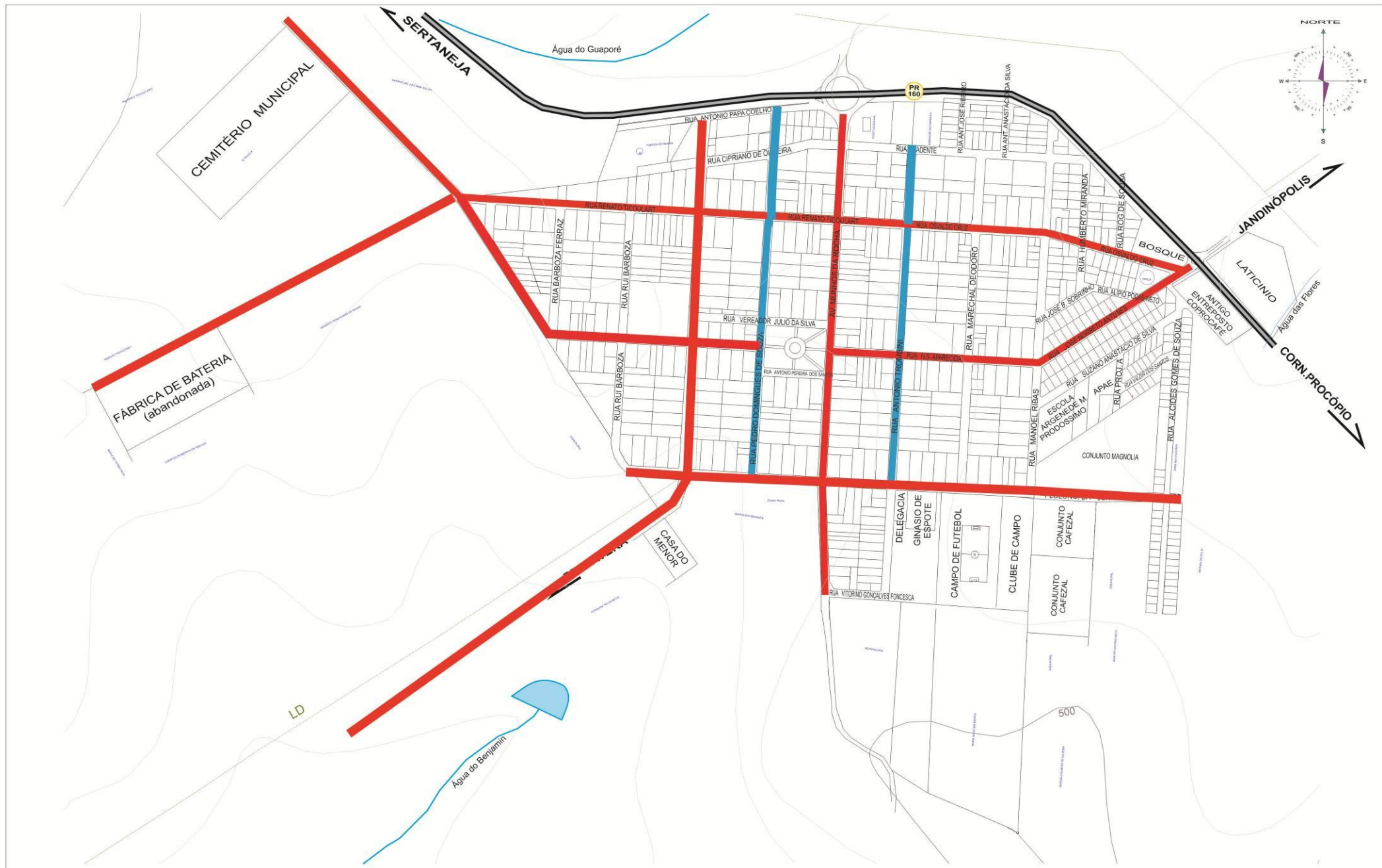
ESC.: 1:125

# ANEXO VI









**LEGENDA**

**Hidrografia**

- Rio Perene
- Rio Intermitente
- Lagos e Lagoas

**Altimetria**

- Curva-Mestra
- Curva-Intermediária

**Sistema Viário**

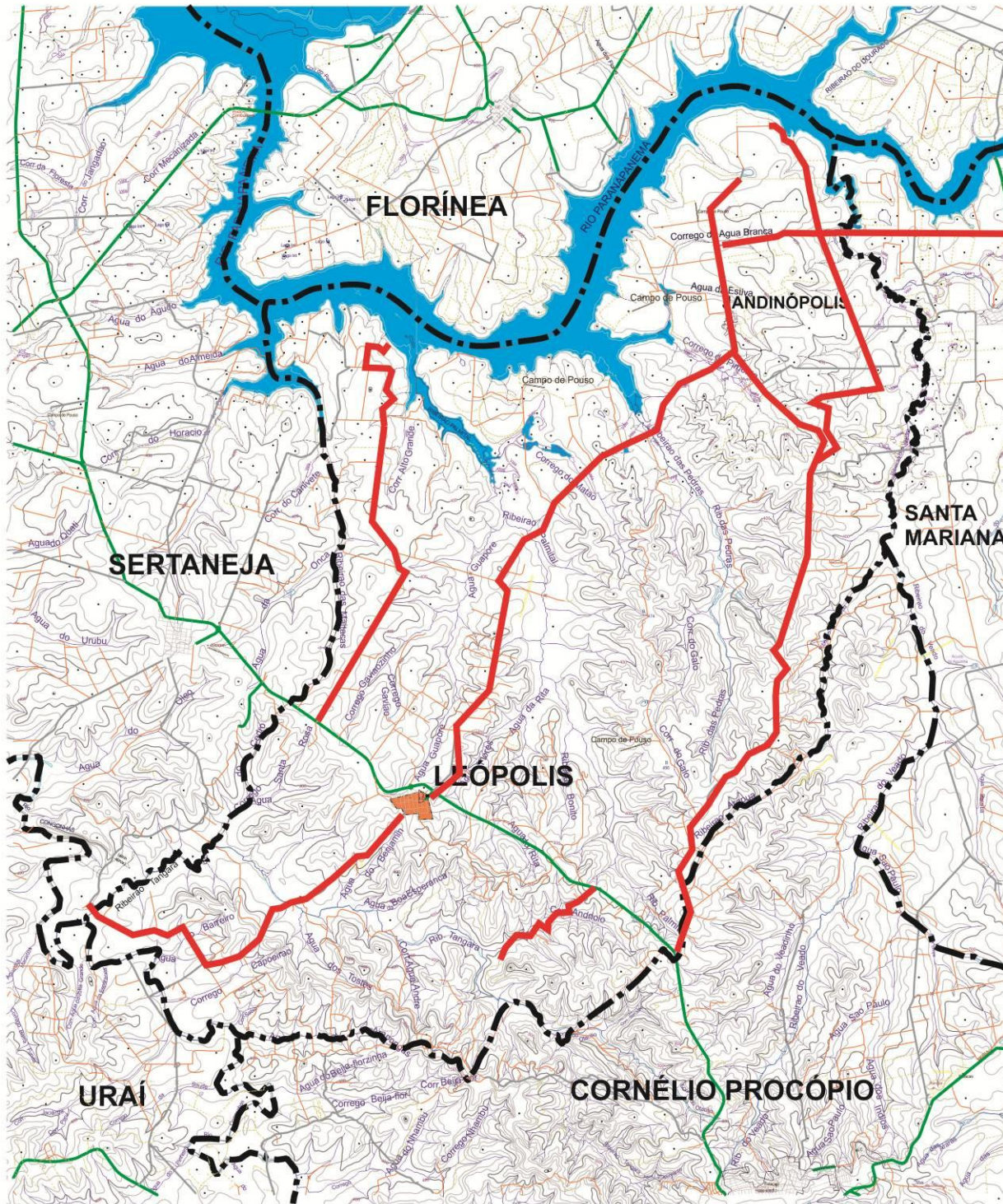
- Federal
- Estadual
- Vias Expressas
- Vias Estruturantes
- Vias Coletoras
- Vias Locais



ESCALA GRÁFICA

Fonte: Base Cartográfica Adaptada da COPEL e Paraná Cidade. SISTEMA DE PROJEÇÃO: U.T.M. (Unidade Transverso de Mercator.)





**LEGENDA**

**Divisão Política**  
 - - - - - Perímetro Municipal  
 ■■■■■ Perímetro Urbano

**Sistema Viário**  
 -160- Rodovia Estadual  
 — Rodovia Municipal  
 — Leito natural  
 ..... Caminhos  
 — Arruamento Urbano

**Hidrografia**  
 ~~~~~ Rio Perene  
 ~~~~~ Rio Intermitente  
 ■ Lago e Lagoas

**Altimetria**  
 ~~~~~ 500 Curva-Mestra  
 ~~~~~ Curva-Intermediária

**ESTRADAS MUNICIPAIS PRINCIPAIS**



ESCALA GRÁFICA

Fonte: Base Cartográfica Adaptada da COPEL e Paraná Cidade. SISTEMA DE PROJEÇÃO: U.T.M. (Unidade Transverso de Mercator.)



|             |                              |
|-------------|------------------------------|
| Município   | LEÓPOLIS                     |
|             | PLANO DIRETOR MUNICIPAL      |
| Mapa        | ANEXO LEI                    |
|             | SISTEMA VIÁRIO MUNICIPAL     |
| Prancha nº  | Data 29/07/2010              |
| Responsável | Sandra Regina Oliveira Neves |
| Técnico     | Arquiteta - crea: 10720/D-PR |