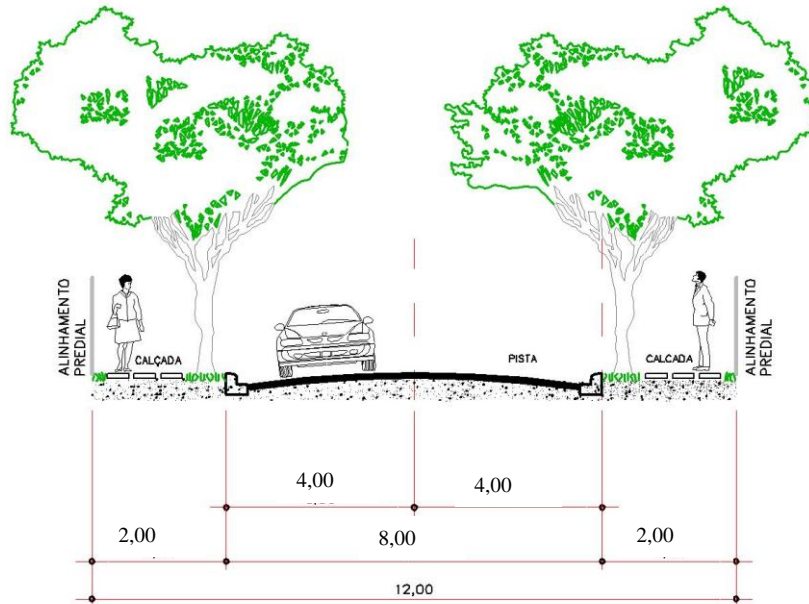
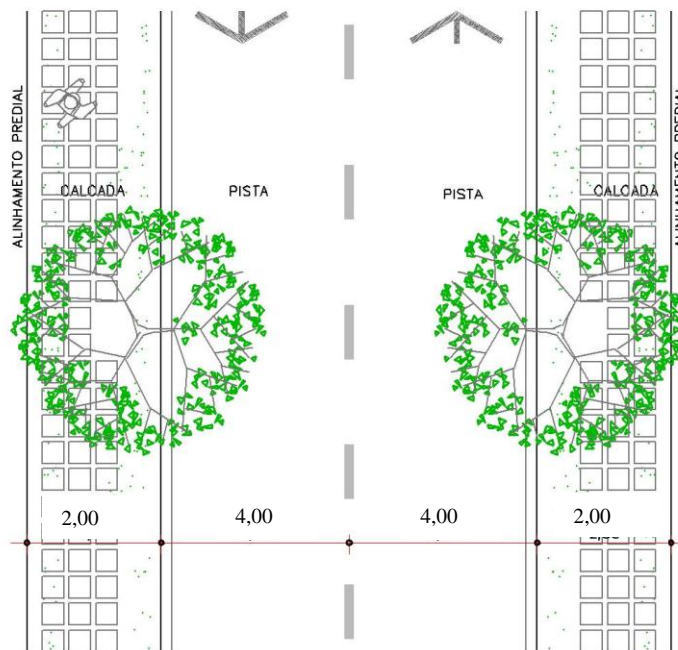


ANEXOS

ANEXO II VIAS LOCAIS



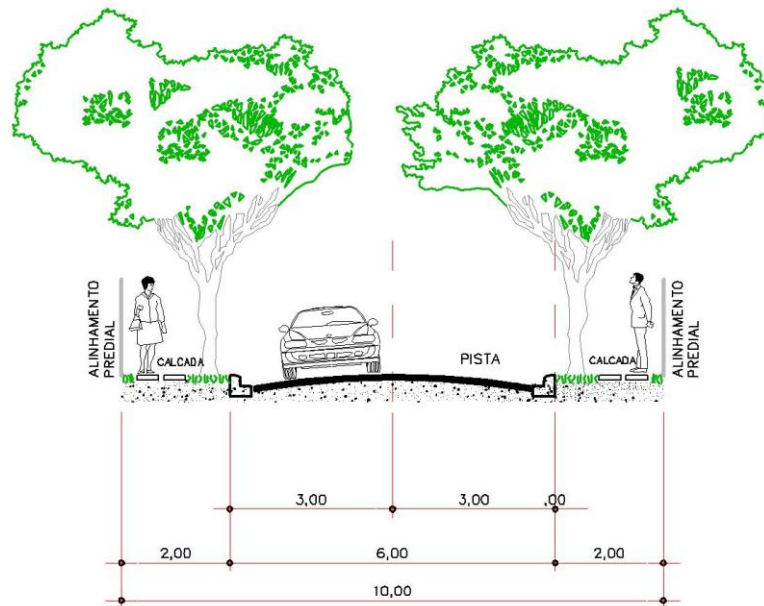
CORTE
ESC.: 1:125



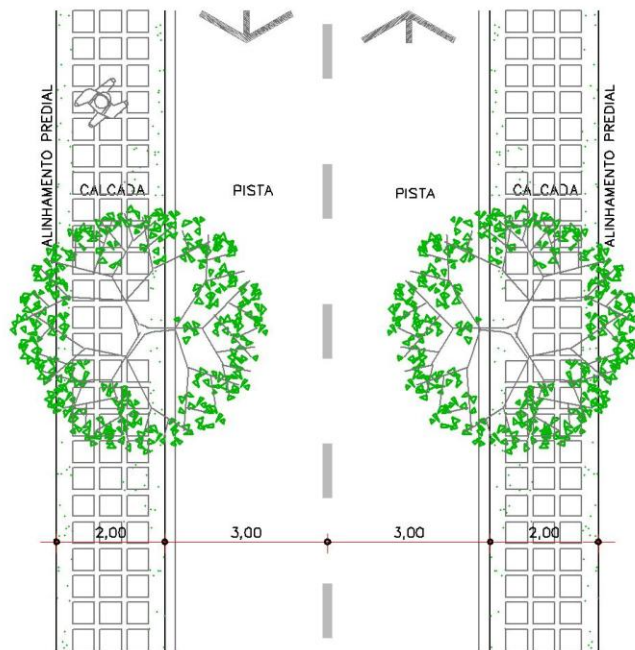
PLANTA
ESC.: 1:125

ANEXO III

VIAS LOCAIS EM ZONAS DE INTERESSE SOCIAL



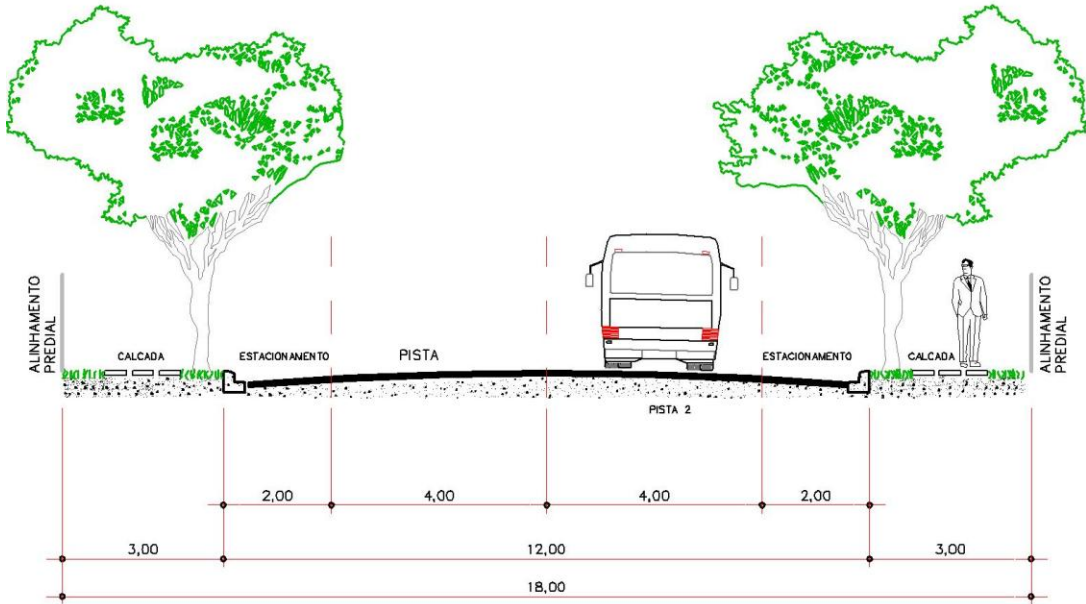
CORTE
ESC.: 1:125



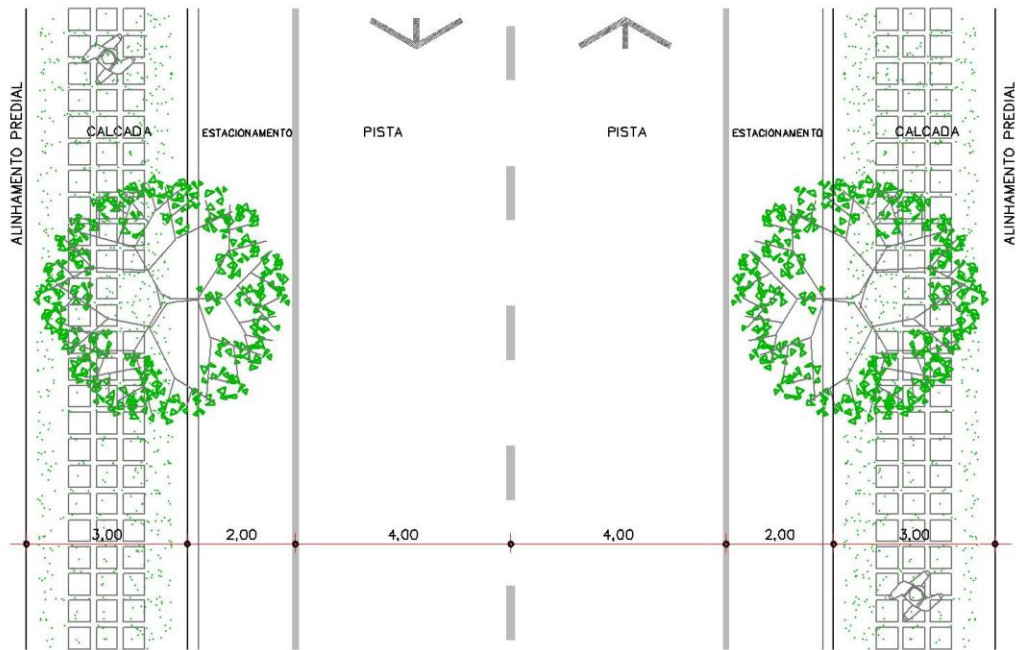
PLANTA
ESC.: 1:125

ANEXO IV

VIAS COLETORAS



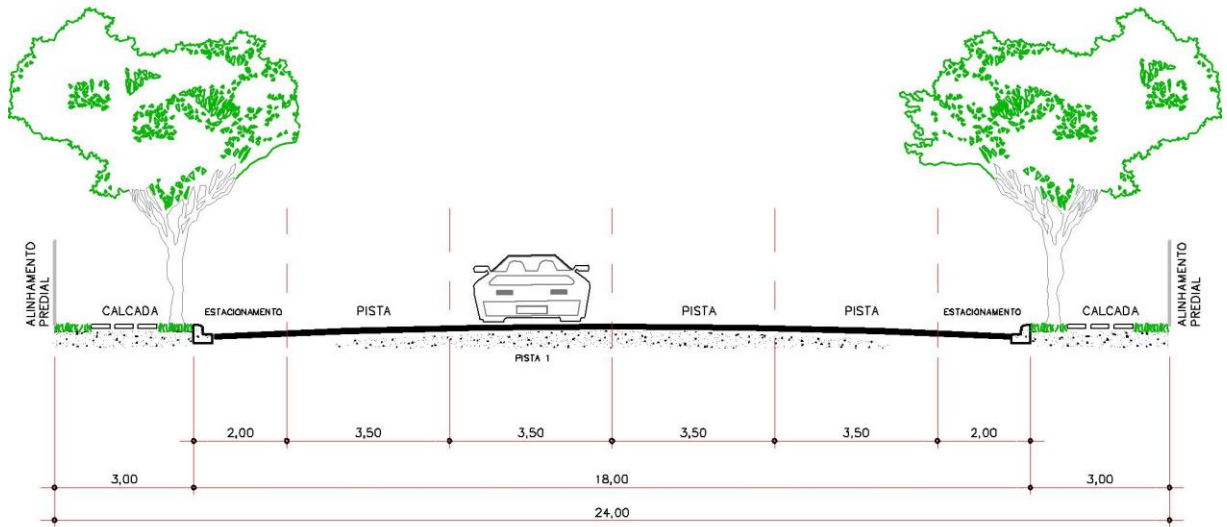
CORTE
ESC.: 1:125



PLANTA
ESC.: 1:125

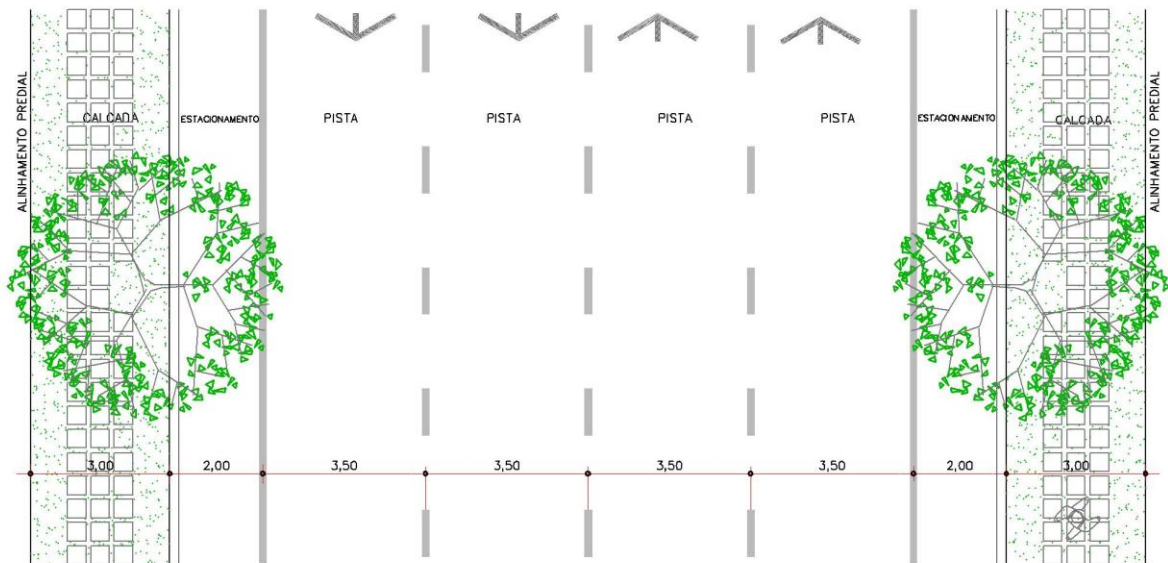
ANEXO V

VIAS ANEL DE CONTORNO E ARTERIAIS



CORTE

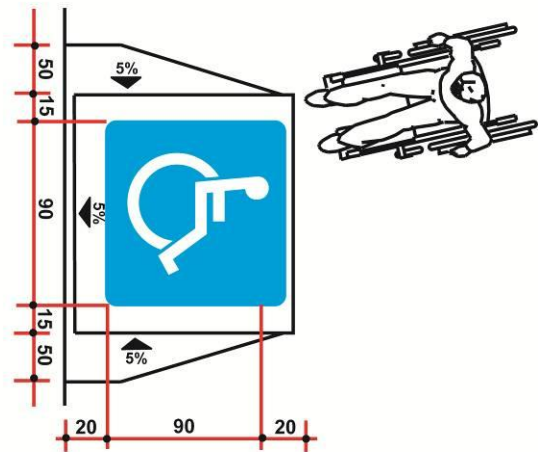
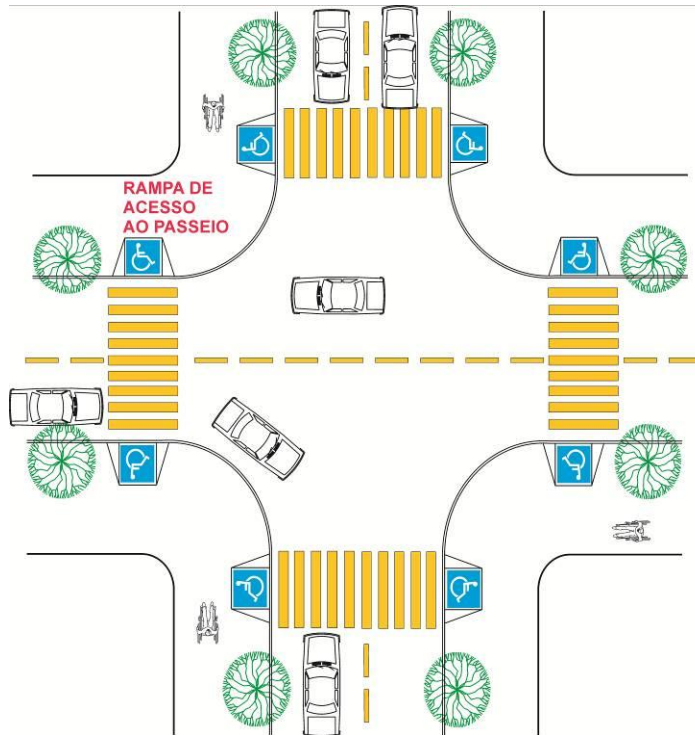
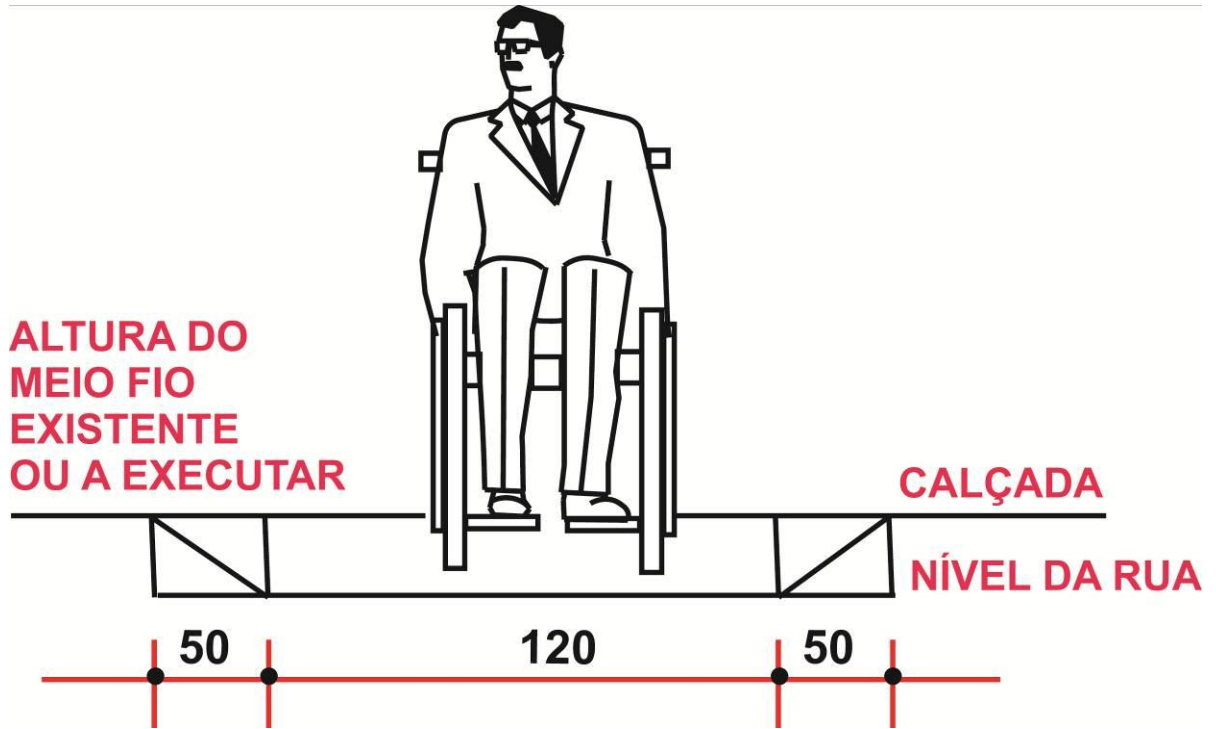
ESC.: 1:125

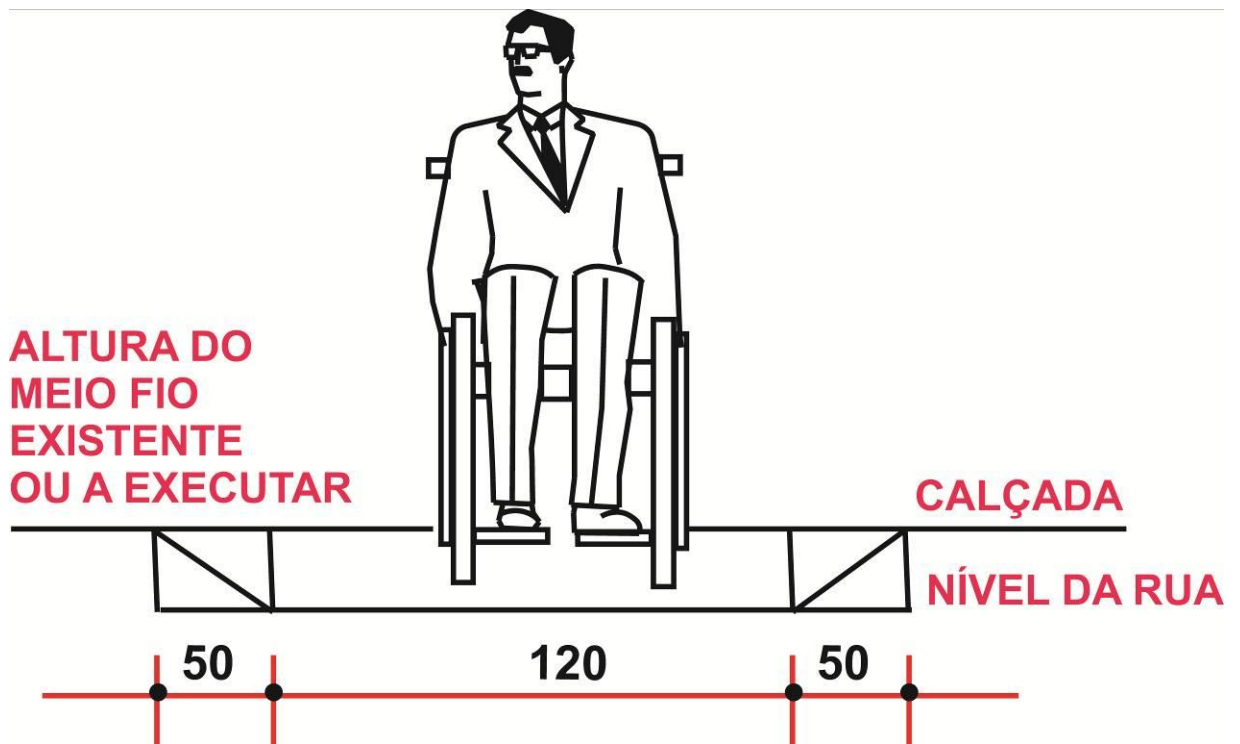


PLANTA

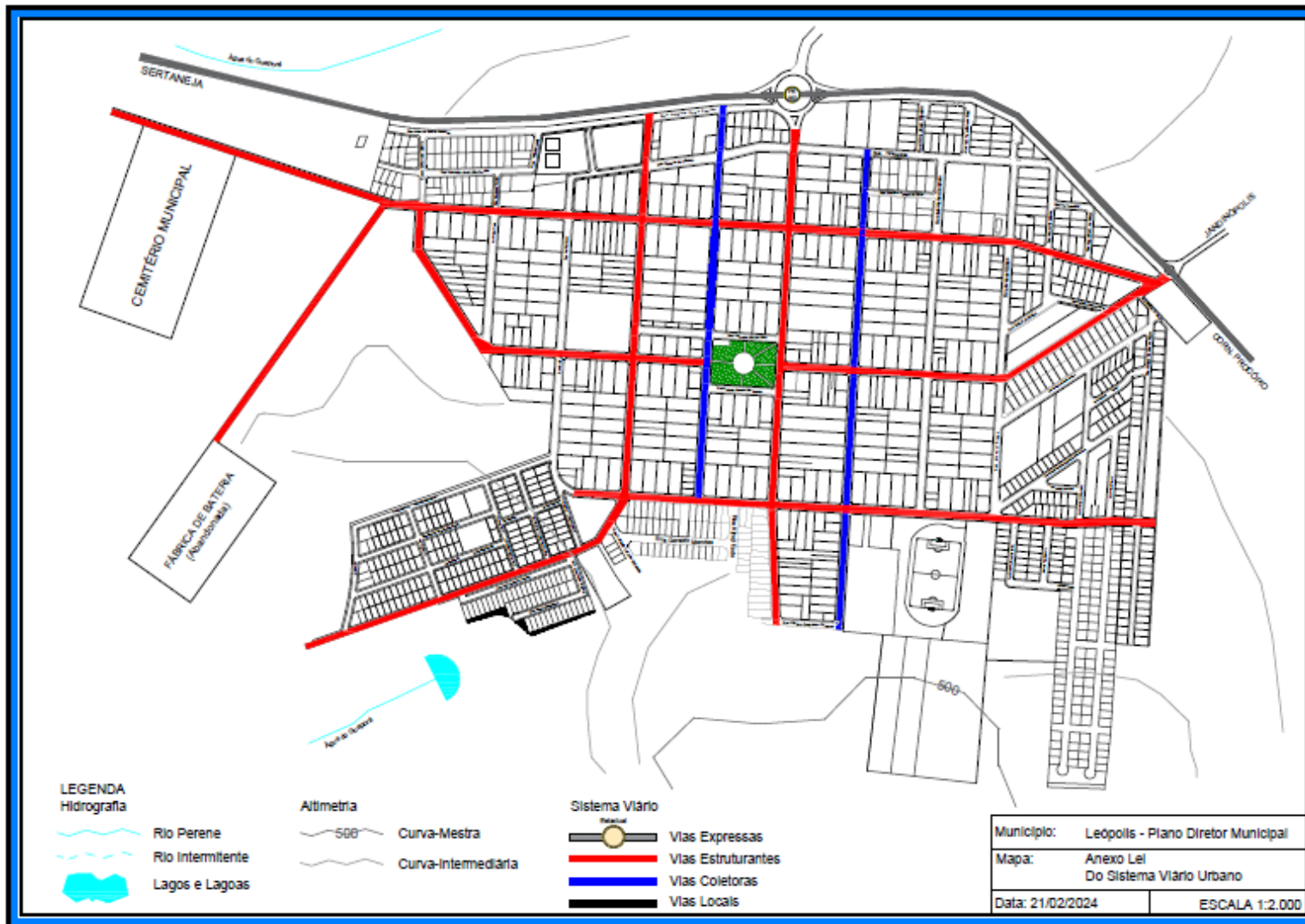
ESC.: 1:125

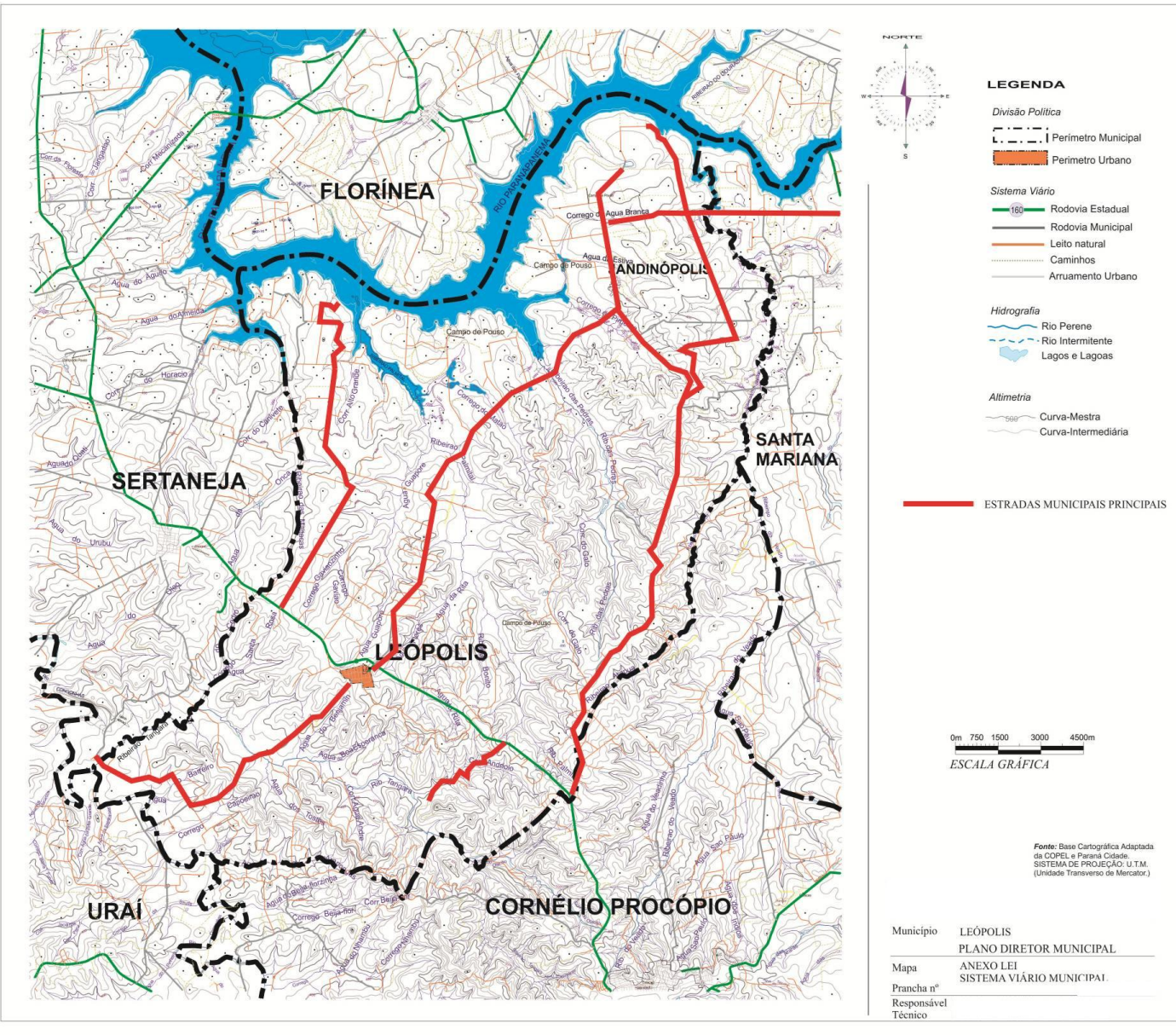
ANEXO VI





ANEXOS VII e VIII





LEGENDA

- Divisão Política*
- Perímetro Municipal
 - Perímetro Urbano
- Sistema Viário*
- 160 Rodovia Estadual
 - Rodovia Municipal
 - Leito natural
 - Caminhos
 - Arruamento Urbano
- Hidrografia*
- Rio Perene
 - Rio Intermitente
 - Lagos e Lagoas
- Altimetria*
- 500 Curva-Mestra
 - Curva-Intermediária

ESTRADAS MUNICIPAIS PRINCIPAIS



Fonte: Base Cartográfica Adaptada da COREL e Paraná Citado. SISTEMA DE PROJEÇÃO: U.T.M. (Unidade Transverso de Mercator).

Município LEÓPOLIS
 PLANO DIRETOR MUNICIPAL
 Mapa ANEXO LEI
 Prancha nº SISTEMA VIÁRIO MUNICIPAL
 Responsável Técnico